



EasyNow

*An Approach to
Multiple Media Delivery*

STREAMMING, SLIDE SHOWS

CAPTURE

1. Script for Audio Recording
2. Audio CDs
3. Broad Works (images)
4. Illustrations

Preparation

1. Slides/Scanned images/Photographs
2. Lesson Audio (Recorded/Extracted)
3. Text To Audio

PRODUCTS

1. **Open Office/Powerpoint Presentation**
2. **Window Movie Maker**
3. **Adobe Photoshop**

Extracting Picture from Power Point Slides

1. Power Point/Open Office

2. Save as .jpg files

Audio

1. Record the lesson Audio as per Slide Show

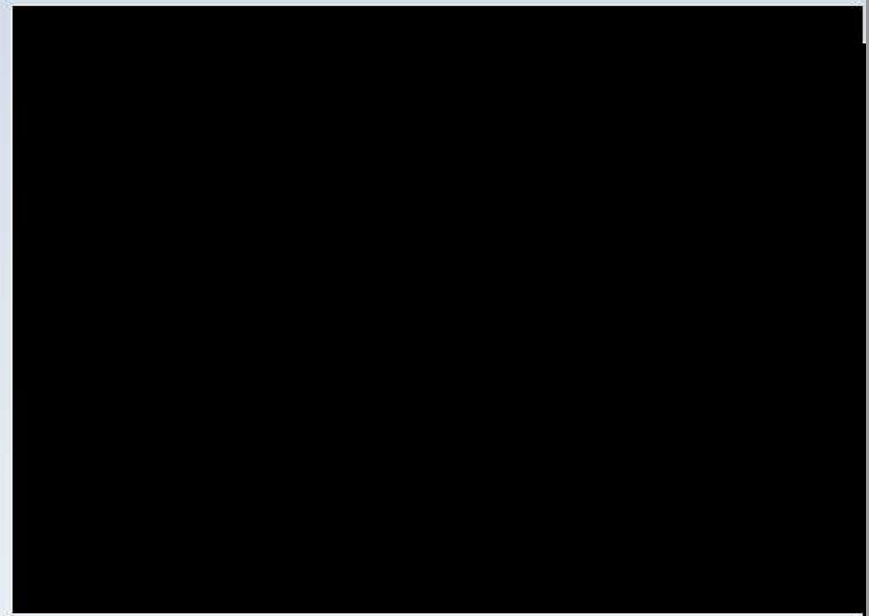
2. Have a set of pictures

Windows Movie Maker

File Edit View Tools Clip Play Help

Import Media AutoMovie

Imported media



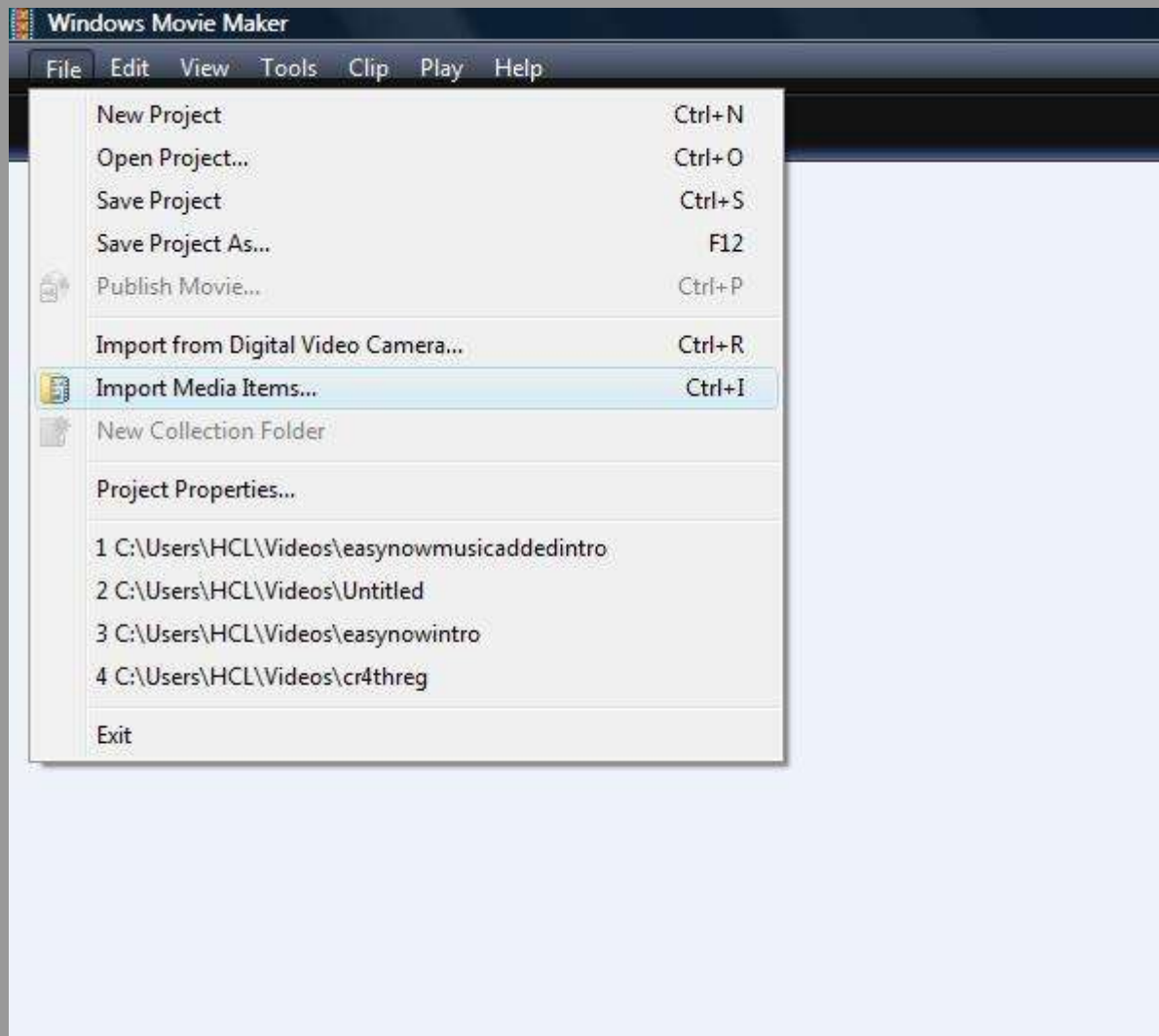
00:00:00.00 /

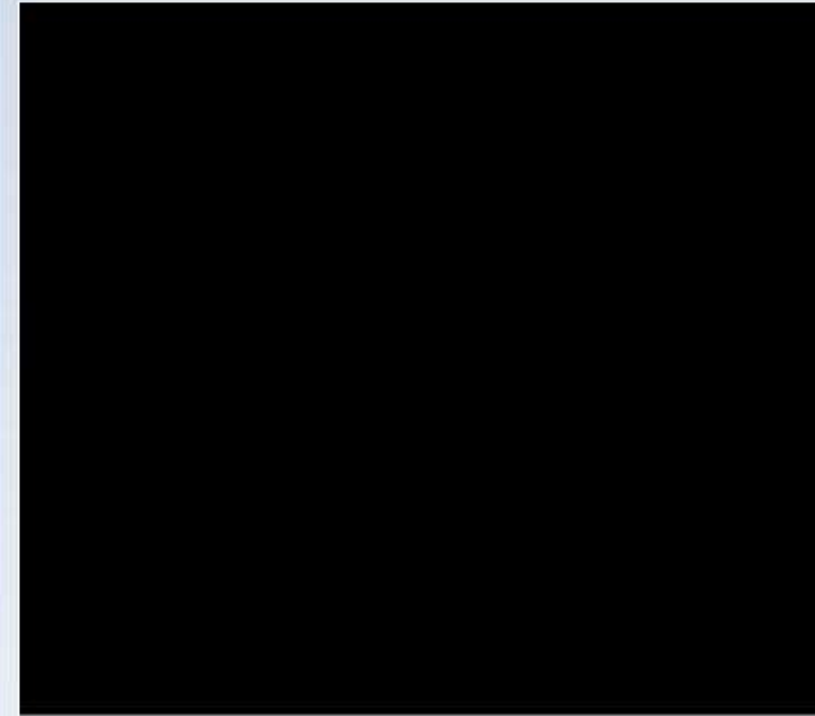
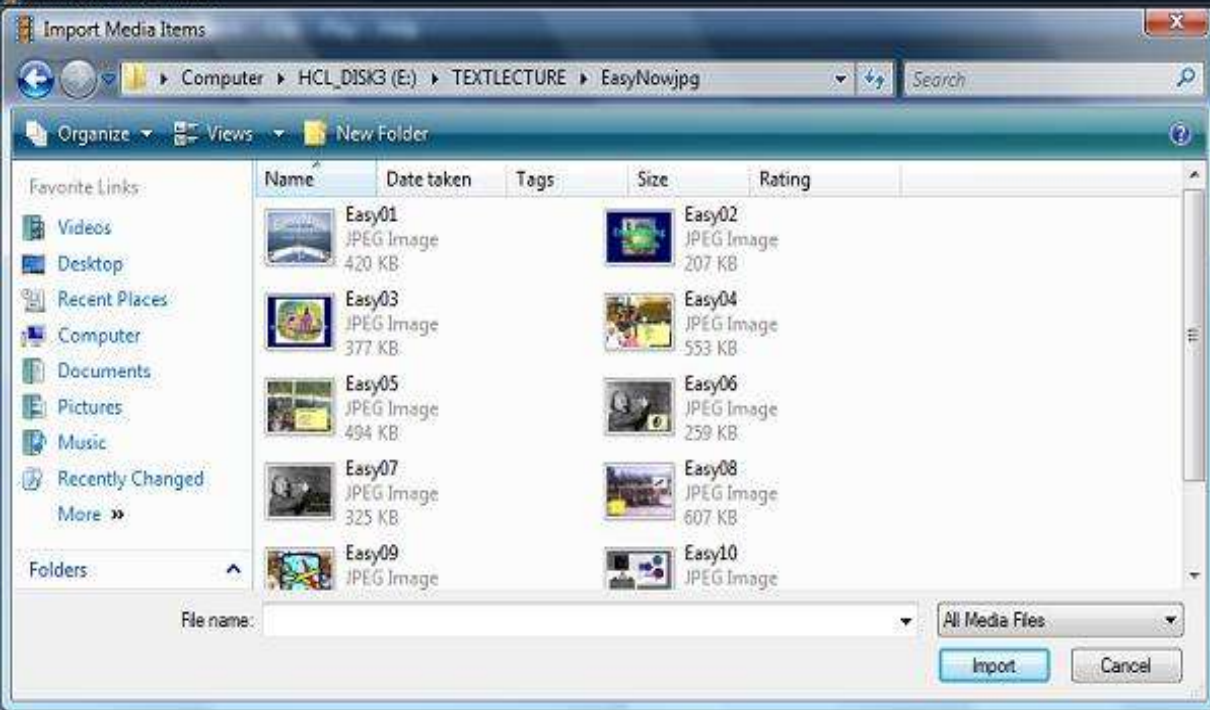


Timeline

00:00 00:00:05.00 00:00:10:40.00 00:00:45.00 00:00:50.00 00:00:55.00 00:01:00.00 00:01:05.00 00:01:10.00 00:01:15.00 00:01:20.00 00:01:25.00 00:01:30.00

Video Drag media here





00:00:00.00 / 00:01:30.00



Timeline < > < >

00:00 00:00:05.00 00:00:10.00 00:00:15.00 00:00:20.00 00:00:25.00 00:00:30.00 00:00:35.00 00:00:40.00 0 00:01:00.00 00:01:05.00 00:01:10.00 00:01:15.00 00:01:20.00 00:01:25.00 00:01:30.00

Video Drag media here

Audio/Music

Windows Movie Maker

File Edit View Tools Clip Play Help

Import Media AutoMovie Publish Movie

Imported media

Easy01 Easy02 Easy03 Easy04 Easy05 Easy06 Easy07

Easy08 Easy09 Easy10 Easy11 easy12

easy12

00:00:00.00 /

Timeline 00:00 00:00:05.00 00:00:10.00 00:00:15.00 00:00:20.00 00:00:25.00 00:00:30.00 00:00:35.00 00:00:40.00 00:00:45.00 00:00:50.00 00:00:55.00 00:01:00.00 00:01:05.00 00:01:10.00 00:01:15.00 00:01:20.00 00:01:25.00 00:01:30.00

Windows Movie Maker

Import Media Items

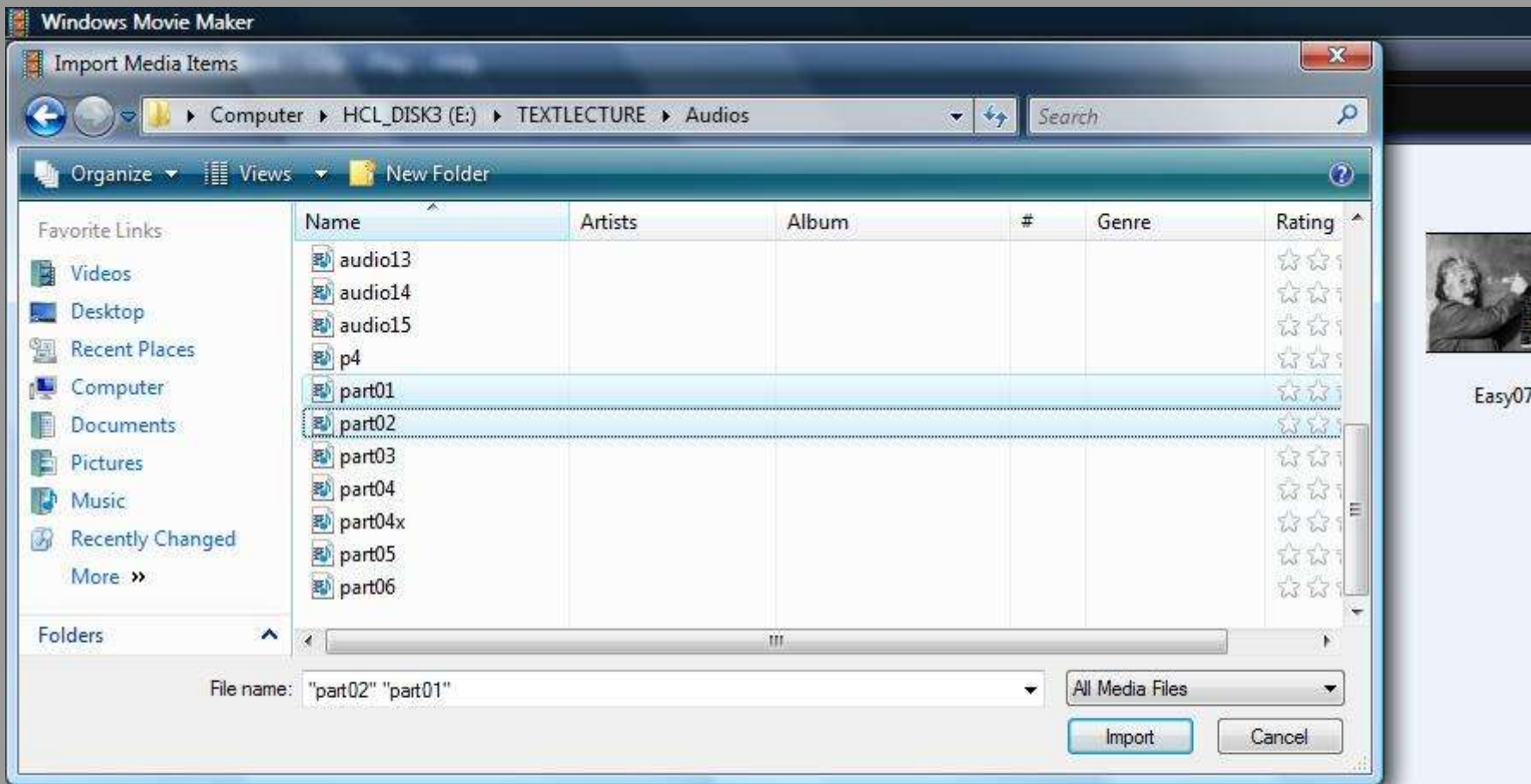
Computer > HCL_DISK3 (E:) > TEXTLECTURE > Audios

Organize Views New Folder

Name	Artists	Album	#	Genre	Rating
audio13					☆☆☆☆
audio14					☆☆☆☆
audio15					☆☆☆☆
p4					☆☆☆☆
part01					☆☆☆☆
part02					☆☆☆☆
part03					☆☆☆☆
part04					☆☆☆☆
part04x					☆☆☆☆
part05					☆☆☆☆
part06					☆☆☆☆

File name: "part02" "part01" All Media Files

Import Cancel

















Windows Movie Maker

File Edit View Tools Clip Play Help

Import Media AutoMovie Publish Movie

Imported media

 part01	 part02	 Easy01	 Easy02	 Easy03	 Easy04	 Easy05
 Easy06	 Easy07	 Easy08	 Easy09	 Easy10	 Easy11	 easy12

Timeline

00:00 00:00:05.00 00:00:10.00 00:00:15.00 00:00:20.00 00:00:25.00 00:00:30.00 00:00:35.00 00:00:40.00 00:00:45.00 00:00:50.00 00:00:55.00 00:01:00.00



part01



part02



Easy01



Easy02



Easy03



Easy04



Easy05



Easy06



Easy07



Easy08



Easy09



Easy10



Easy11



easy12

Timeline

00:00 00:00:05.00 00:00:10.00 00:00:15.00 00:00:20.00 00:00:25.00 00:00:30.00 00:00:35.00 00:00:40.00 00:00:45.00 00:00:50.00 00:00:55.00

Video



Audio/Music



Title Overlay



Timeline ◻ ◀ ▶ 🔍 🗨

00:00 00:00:05.00 00:00:10.00 00:00:15.00 00:00:20.00 00:00:25.00 00:00:30.00 00:00:35.00 00:00:40.00 00:00:45.00 00:00:50.00 00:00:

Video ⊕

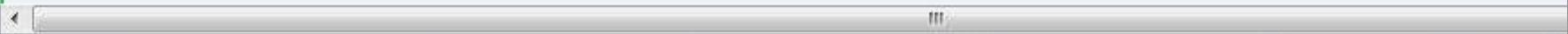


Click and drag to trim the clip

Audio/Music



Title Overlay




The image shows a video editing software interface with a timeline. The timeline is divided into three tracks: Video, Audio/Music, and Title Overlay. The Video track contains a sequence of video clips, including a blue screen with 'Eas...', a green screen with 'Empowering Teachers', and several other clips with various thumbnails. The Audio/Music track shows a waveform with three segments labeled 'part01' and 'part02'. The Title Overlay track is currently empty. The interface includes a timeline ruler at the top with time markers from 00:00 to 00:01:10.00. The Windows taskbar is visible at the bottom, showing several open applications: Yahoo! Messenger, ANU, Windows Movie Maker, and a Yahoo! Mail inbox with 1420 unread messages. The Paint application is also open, showing a blank white canvas.


Windows Movie Maker

File Edit View Tools Clip Play Help


- New Project Ctrl+N
- Open Project... Ctrl+O
- Save Project Ctrl+S
- Save Project As... F12
- Publish Movie... Ctrl+P**
- Import from Digital Video Camera... Ctrl+R
- Import Media Items... Ctrl+I
- New Collection Folder
- Project Properties...
- 1 C:\Users\HCL\Videos\easynewmusicaddedintro
- 2 C:\Users\HCL\Videos\Untitled
- 3 C:\Users\HCL\Videos\easynewintro
- 4 C:\Users\HCL\Videos\cr4threg
- Exit




Easy02



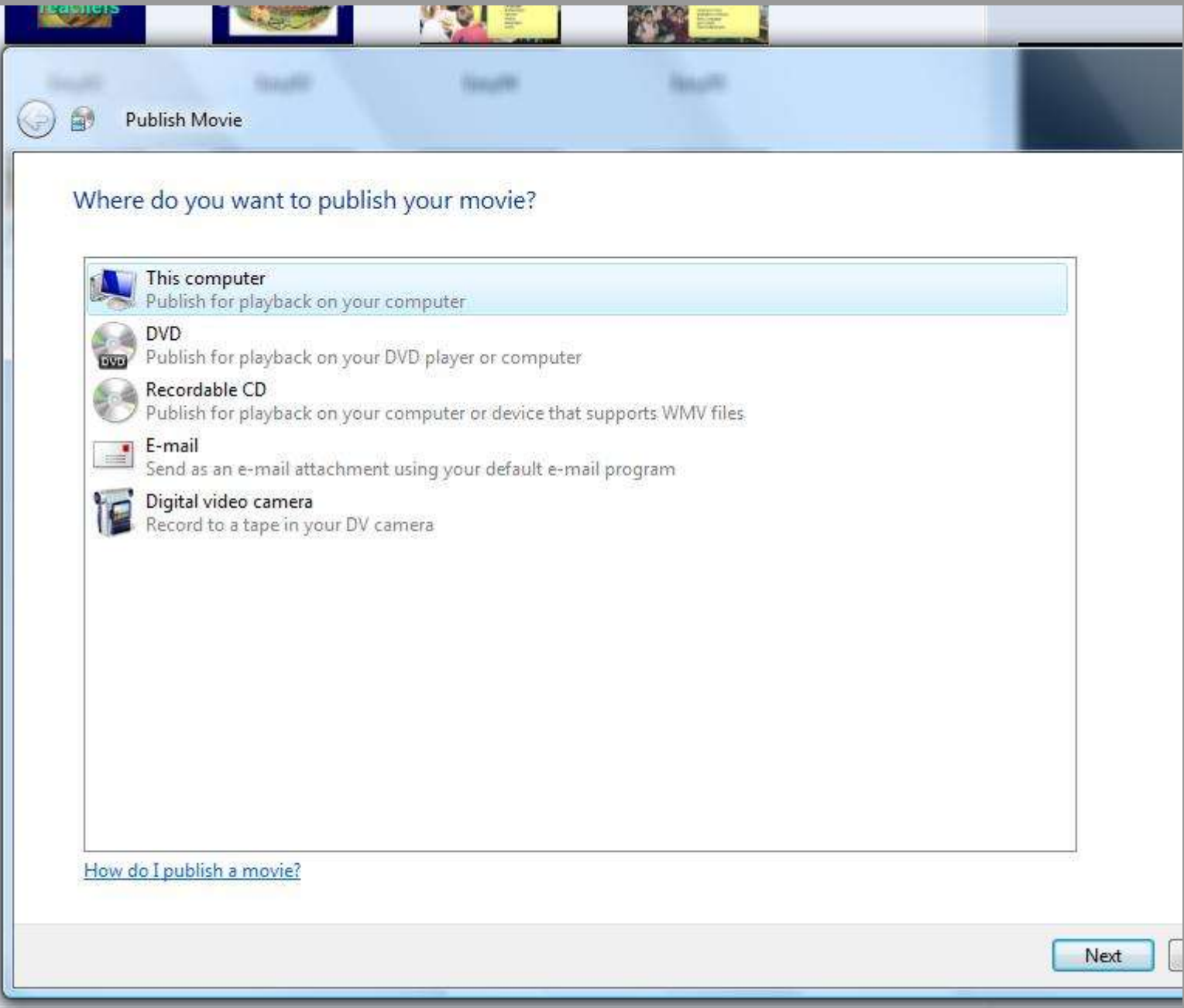
Easy03



Easy09



Easy10



Where do you want to publish your movie?



This computer

Publish for playback on your computer



DVD

Publish for playback on your DVD player or computer



Recordable CD

Publish for playback on your computer or device that supports WMV files



E-mail

Send as an e-mail attachment using your default e-mail program



Digital video camera

Record to a tape in your DV camera

[How do I publish a movie?](#)

Next



Publish Movie

Name the movie you are publishing

File name:

Publish to:

Next

Cancel

Choose the settings for your movie

The setting you select determines the quality and file size of your movie:

Best quality for playback on my computer (recommended)

Compress to:

More settings: DV-AVI (PAL) ▾

- DV-AVI (PAL)
- Windows Media Portable Device (PAL) (1.0 Mbps)
- Windows Media DVD Quality (PAL) (3.0 Mbps)
- Windows Media DVD Widescreen Quality (PAL) (3.0 Mbps)
- Windows Media HD 720p (PAL) (5.9 Mbps)
- Windows Media HD for Xbox 360 (PAL) (6.9 Mbps)
- Windows Media HD 1080p (PAL) (7.8 Mbps)
- Windows Media Low Bandwidth (PAL) (117 kbps)
- Windows Media VHS Quality (PAL) (1.0 Mbps)

Movie settings

File type: Audio-Video Interleaved (AVI)

Bit rate: 28.6 Mbps

Display size: 720 x 576 pixels

Aspect ratio: 4:3

Frames per second: 25

File size

Estimated space required:
314.65 MB

Estimated disk space available on drive E:
248.60 GB

Publish

Cancel



Publish Movie

Publishing your movie...



Estimating time remaining...

0 %

Movie file name:

Movie

Destination:

E:\TEXTLECTURE\

Next

Cancel



Publish Movie

Publishing your movie...



40 seconds remaining

49 %

Movie file name:

Movie

Destination:

E:\TEXTLECTURE\

Next

Cancel



Publish Movie

Your movie has been published

Optional:

Play movie when I click Finish.

To close Publish Movie, click Finish.

Finish

Windows Media Player

Now Playing

Library

Rip

Burn

Sync

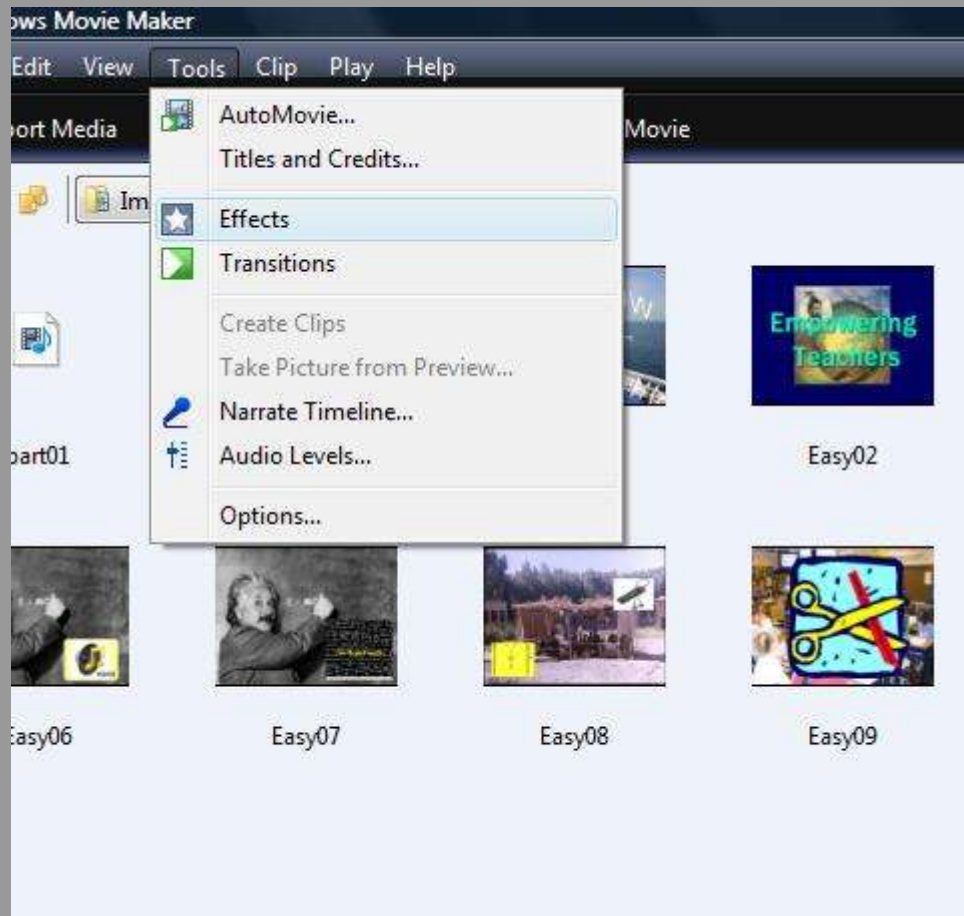
Online Stores

EasyNow

Click to add title

*An Approach to
Multiple Media Delivery*







Warp

Watercolor

Zoom In, to Lower Left

Zoom In, to Lower Right

Zoom In, to Upper Left

Zoom In, to Upper Right

Zoom



Zoom Out, from Lower Right

Zoom Out, from Upper Left

Zoom Out, from Upper Right

Zoom, Focus Lower Left

Zoom, Focus Lower Right

Zoom, Focus Upper Left

Zoom



Video



Music



Overlay



Fade



Fan, In



Fan, Out



Fan, Up



Filled V, Down



Filled V, Left



Filled V, Right



Filled V, Up



Flip



Heart



Inset, Down Left



Inset, Down Right



Inset, Up Left



Inset, Up Right



Iris



Keyhole



Page Curl, Up Left



Page Curl, Up Right



Pixelate



Rectangle



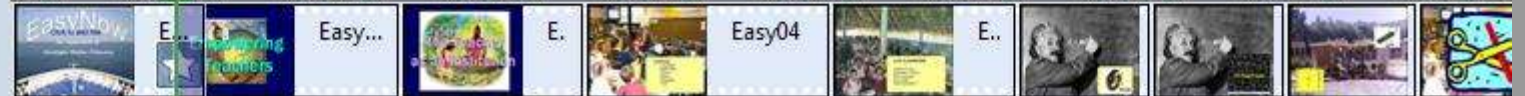
Reveal

Timeline



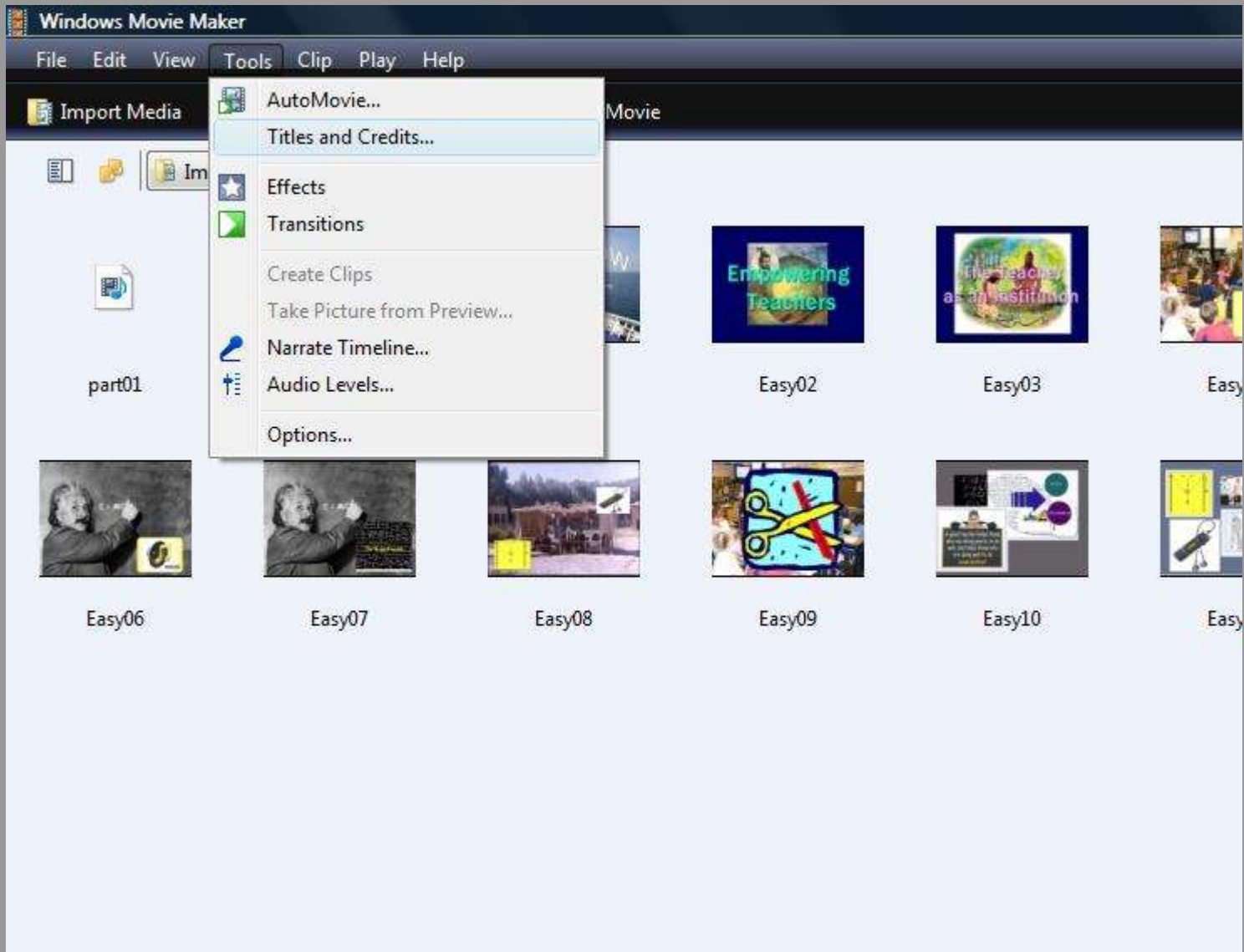
00:00 00:00:05.00 00:00:10.00 00:00:15.00 00:00:20.00 00:00:25.00 00:00:30.00 00:00:35.00 00:00:40.00 00:00:45.00

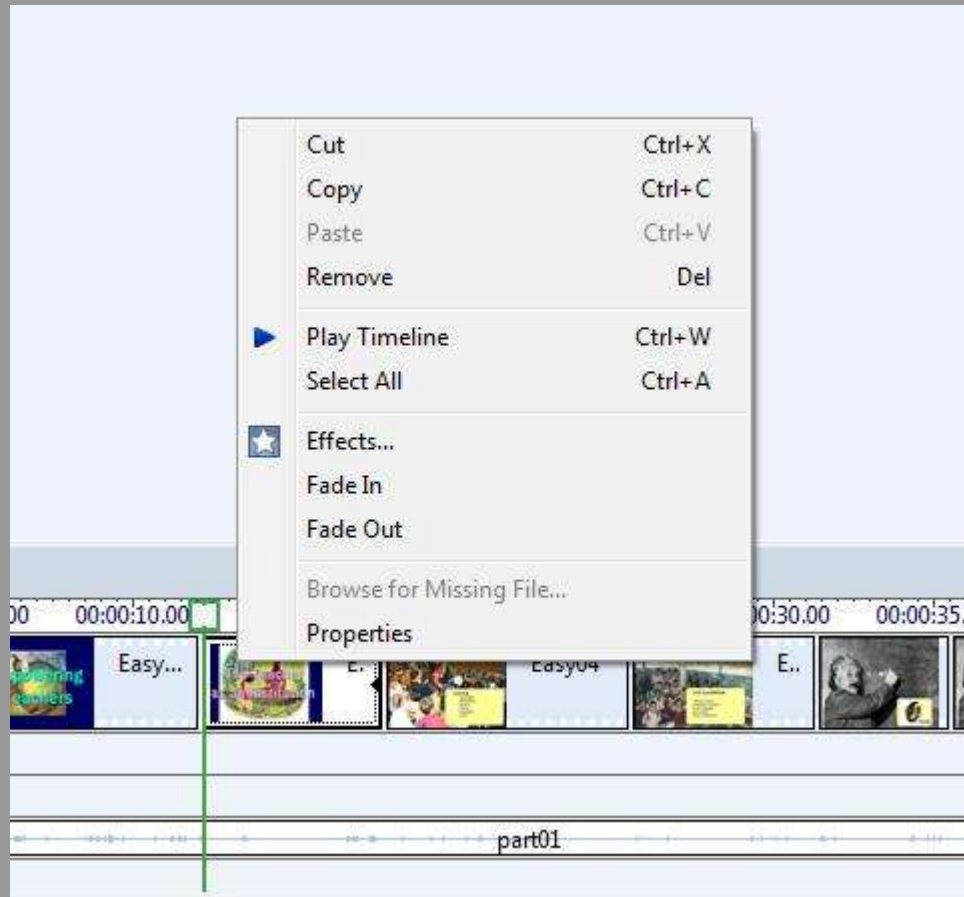
Video

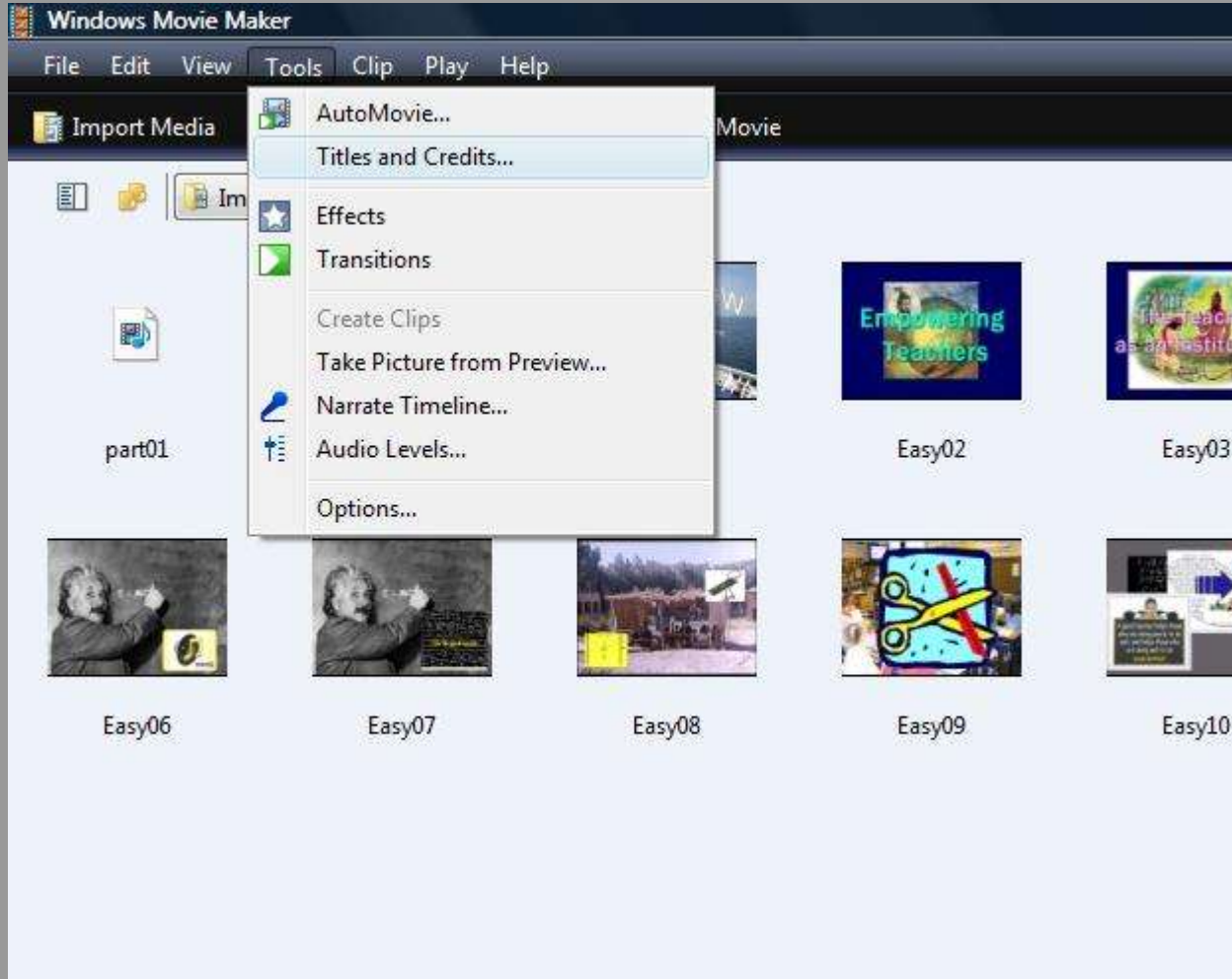


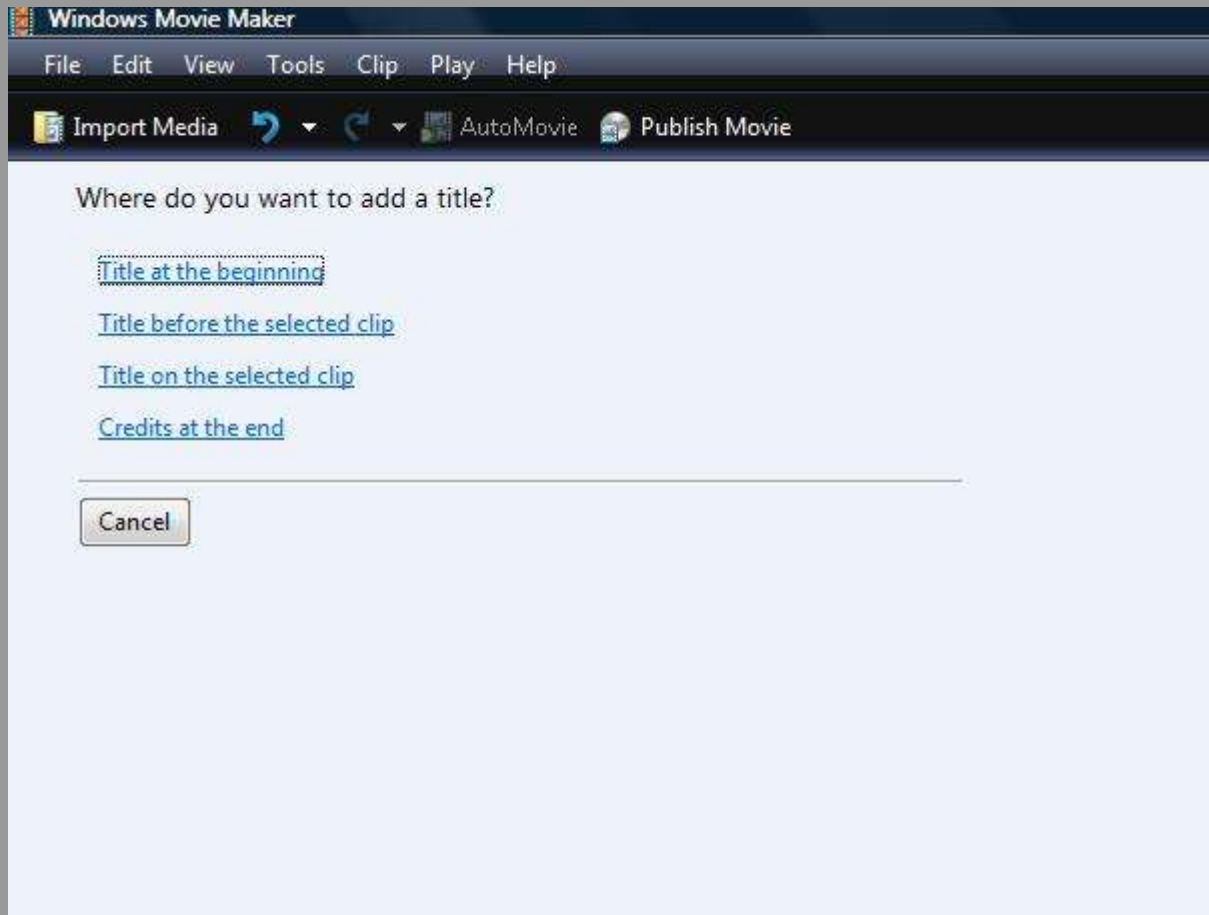
Transition











Windows Movie Maker

File Edit View Tools Clip Play Help

Import Media AutoMovie Publish Movie

Where do you want to add a title?

[Title at the beginning](#)

[Title before the selected clip](#)

[Title on the selected clip](#)

[Credits at the end](#)

Cancel

Enter text for title

THE
SLIDE SHOW

More options:

[Change the title animation](#)

[Change the text font and color](#)

Add Title

Cancel

Fade, In and Out

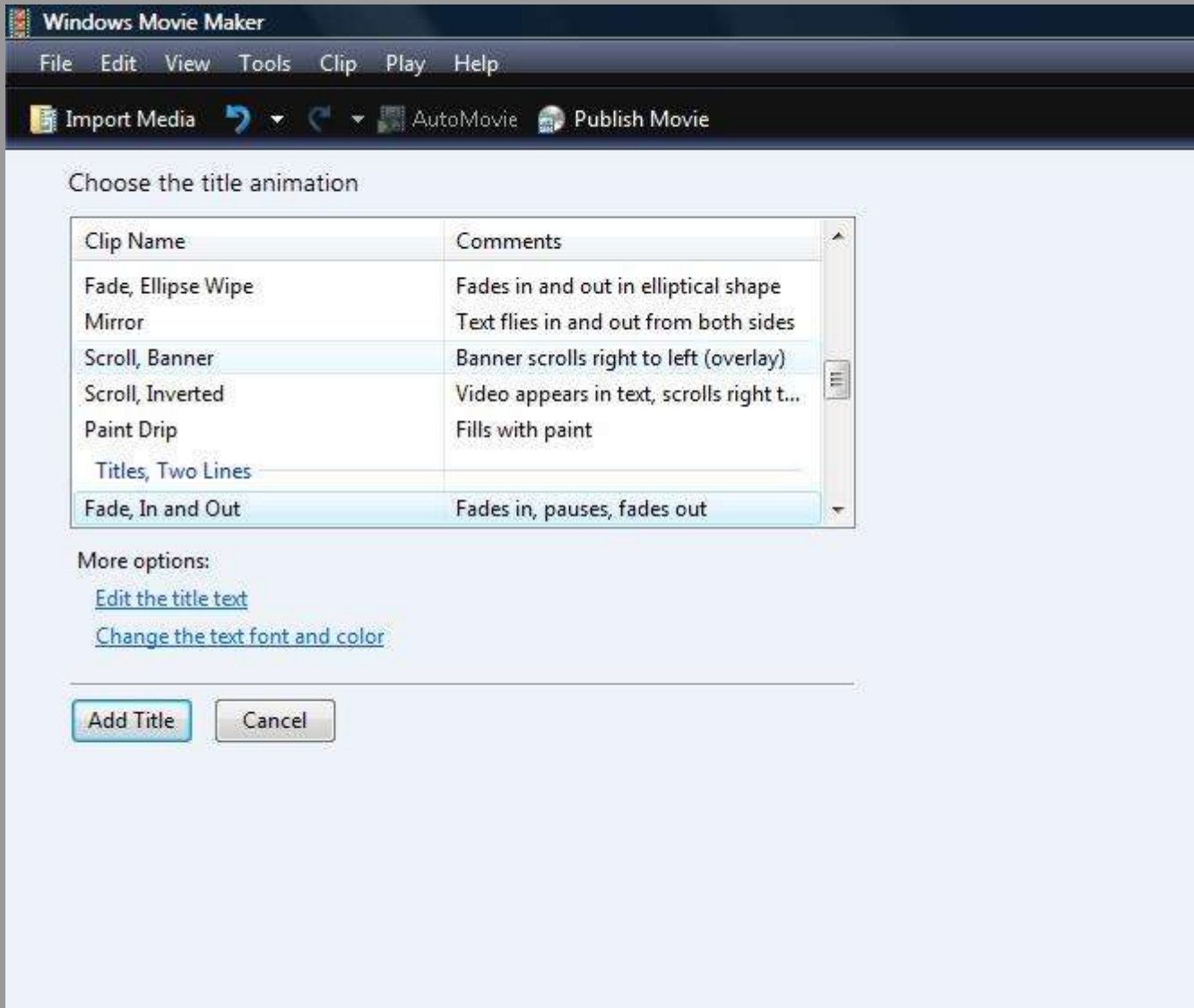
THE
SLIDE SHOW

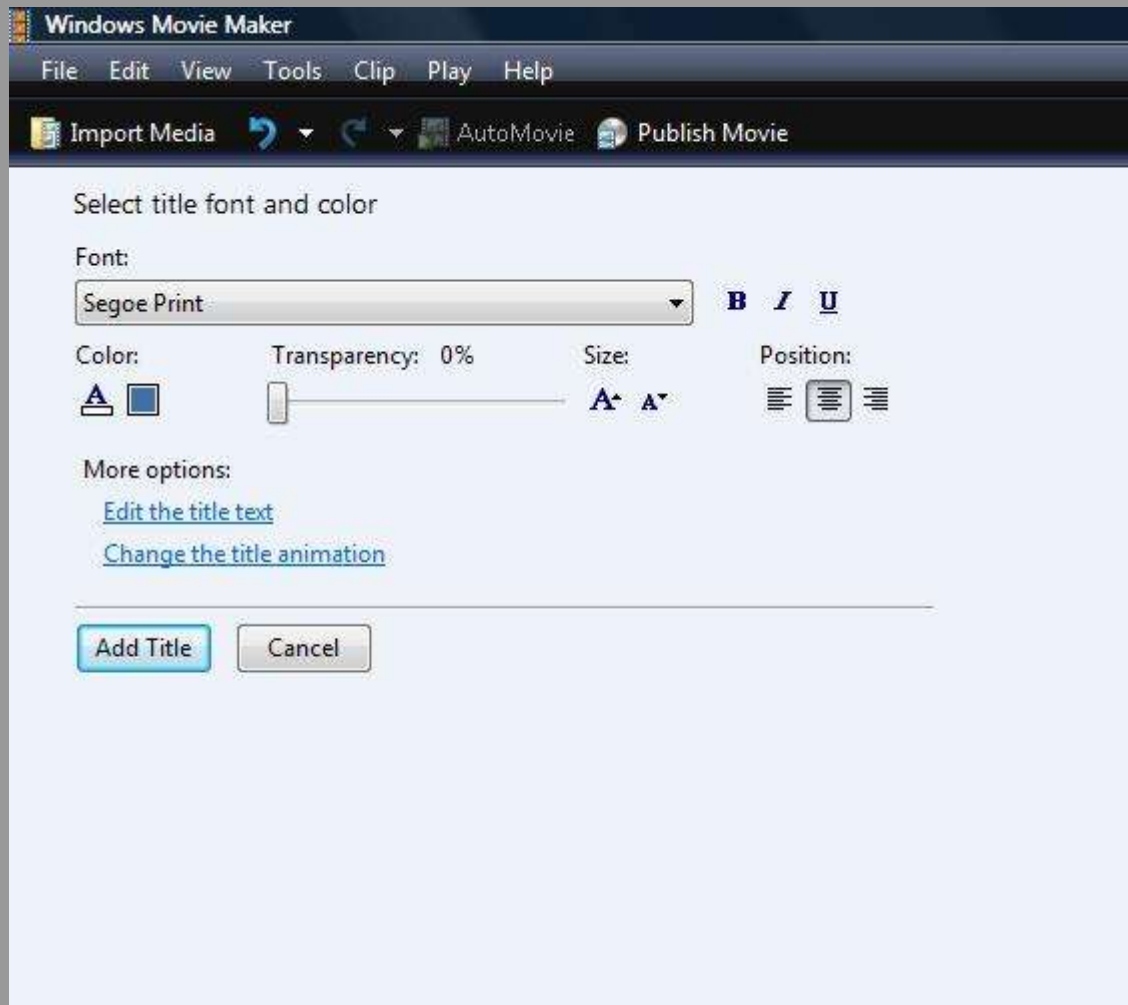
00:00:01.76 / 00:01:30.00

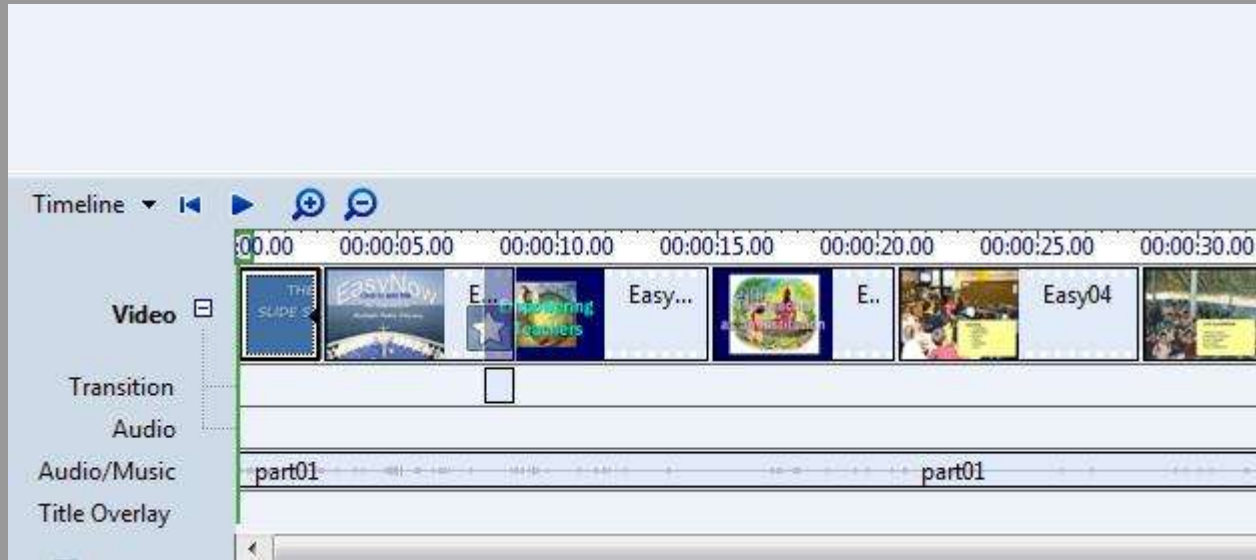


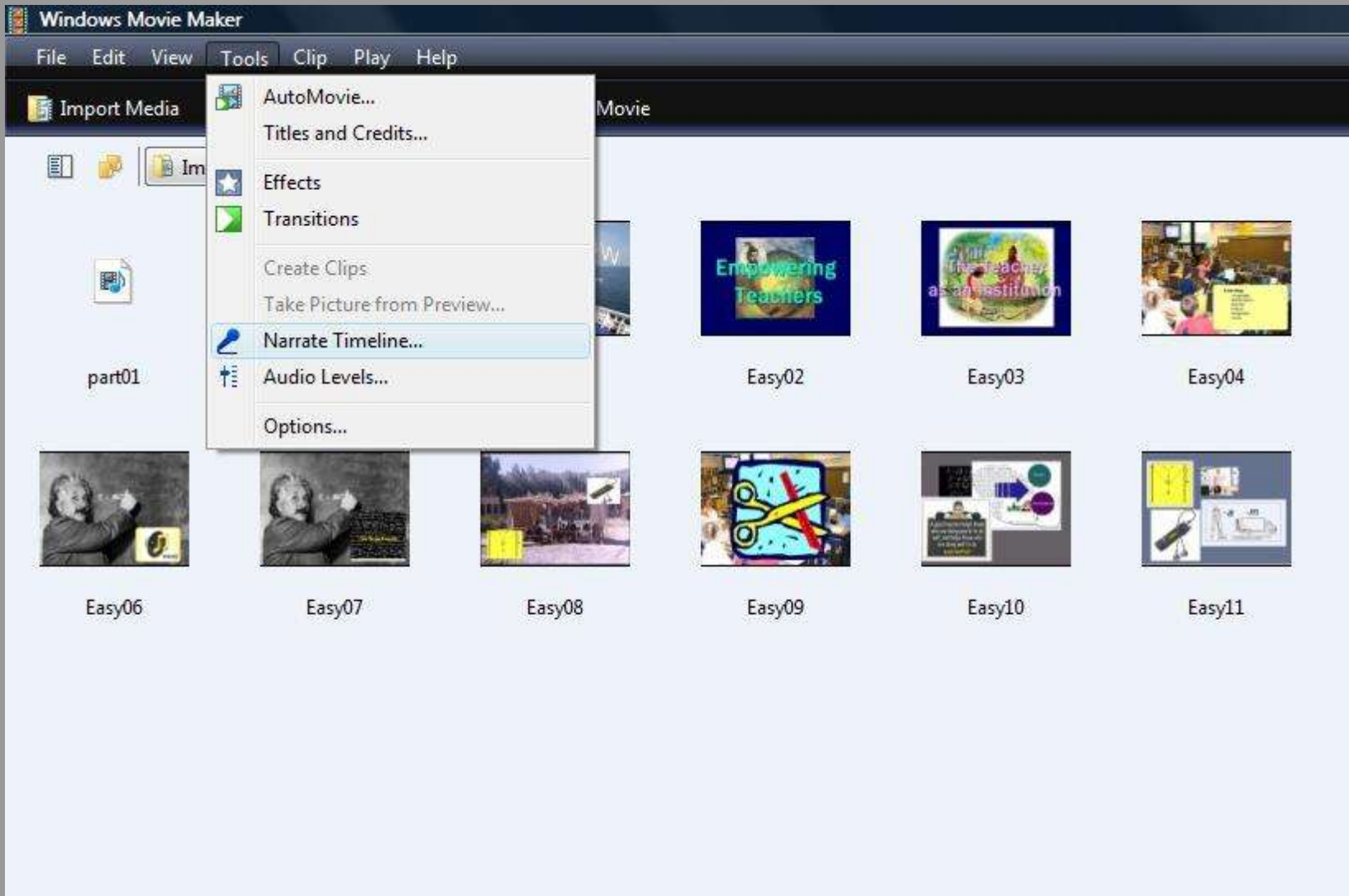
Timeline

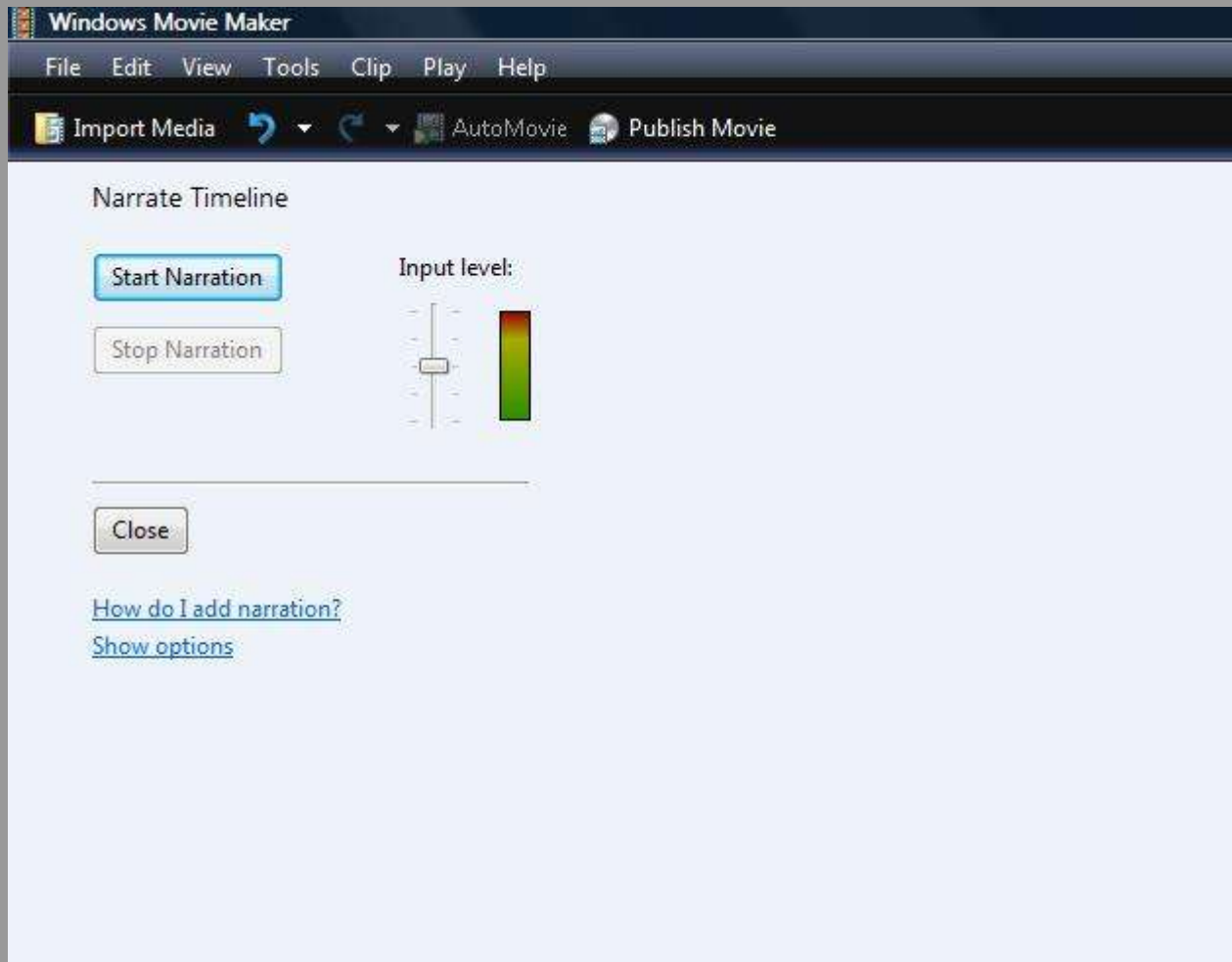
00:00 00:00:05.00 00:00:10.00 00:00:15.00 00:00:20.00 00:00:25.00 00:00:30.00 00:00:35.00 00:00:40.00 00:00:45.00 00:00:50.00 00:00:55.00 00:01:00.00 00:01:05.00 00:01:10.00 00:01:15.00 00:01:20.00 00:01:25.00 00:01:30.00













Windows Movie Maker

File Edit View Tools Clip Play Help


- New Project Ctrl+N
- Open Project... Ctrl+O
- Save Project Ctrl+S
- Save Project As... F12
- Publish Movie... Ctrl+P**
- Import from Digital Video Camera... Ctrl+R
- Import Media Items... Ctrl+I
- New Collection Folder
- Project Properties...
- 1 C:\Users\HCL\Videos\easynewmusicaddedintro
- 2 C:\Users\HCL\Videos\Untitled
- 3 C:\Users\HCL\Videos\easynewintro
- 4 C:\Users\HCL\Videos\cr4threg
- Exit




Easy02



Easy03



Easy09



Easy10